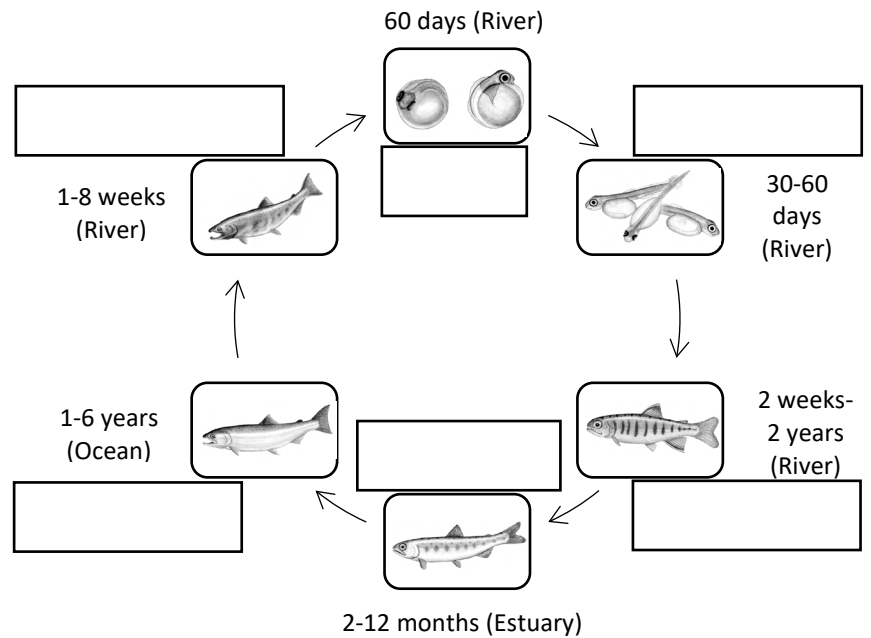


1. What is one thing you saw/heard/smelled/learned about the spawning chum salmon at Kennedy Creek?

2. What are the 6 stages of the salmon life cycle?



3. Habitat Scavenger Hunt

Find the habitat feature signs and write why salmon need them. STAY ON THE TRAIL PLEASE :)

1. Lots of trees near the stream

Trees near the stream help salmon because: _____

2. Logs in the stream

Logs in the stream help salmon because: _____

3. Grape-sized rocks (gravel) on the stream bottom

Gravel in the stream help salmon because: _____

4. Riffles

Riffles help salmon because: _____

5. Pools

Pools help salmon because: _____

6. Cold, clean, clear water

Cold, clean, clear water helps salmon because: _____

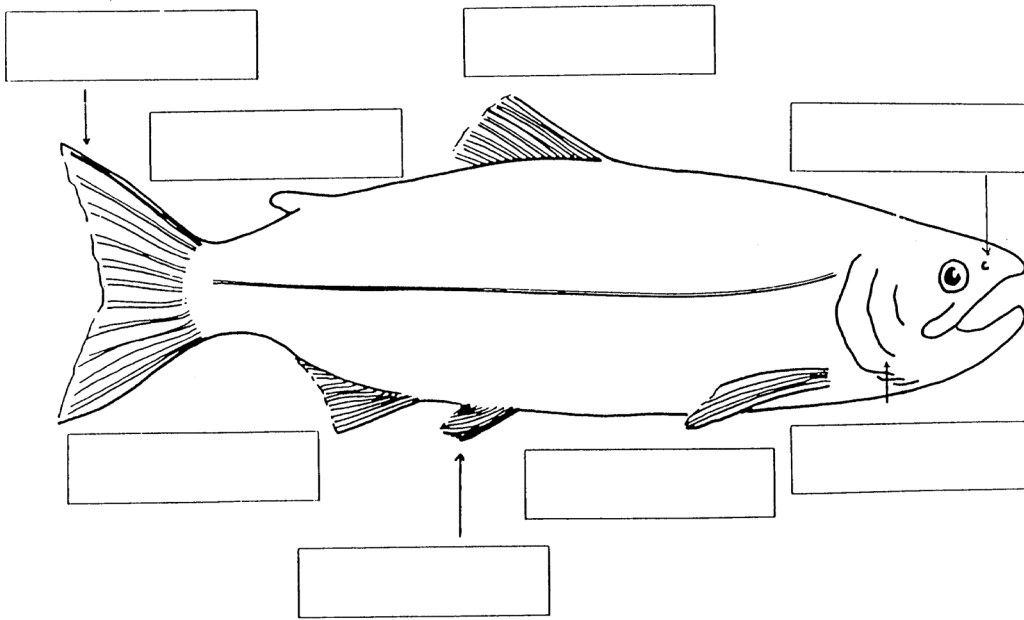
7. Native plants

Native plants help salmon because: _____

8. No trash

No trash helps salmon because: _____

4. Label the internal anatomy of a salmon:



Fins - help salmon turn and balance

- Pectoral Fin
- Pelvic Fin
- Anal Fin
- Dorsal Fin

Adipose Fin - no known purpose

Caudal Fin (Tail) - moves salmon forward

Eyes - let salmon see

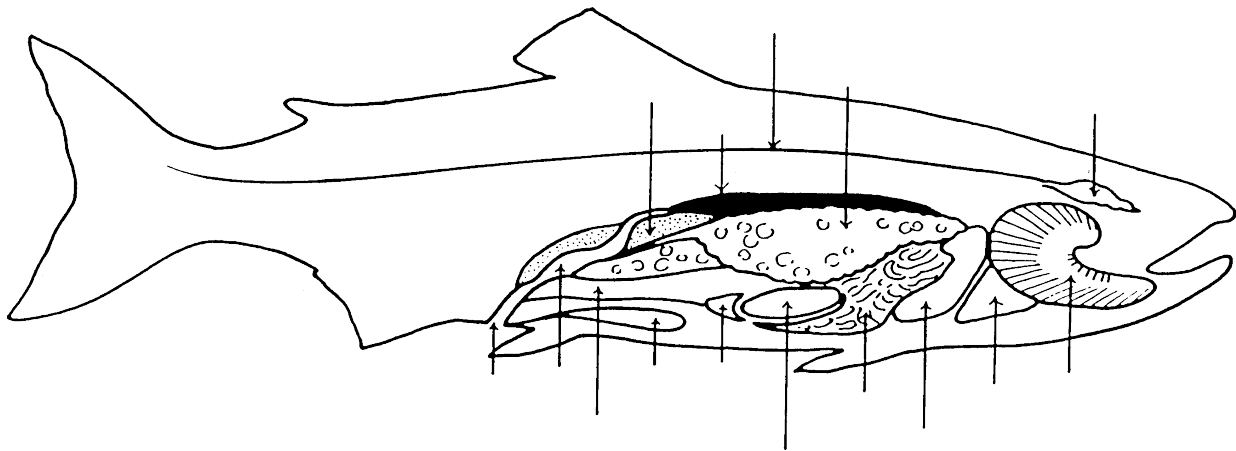
Nostrils - let salmon smell water

Mouth - let salmon eat

Gill Cover - protects gills and sends water to gills

Lateral Line - detects movement of water and other fish

5. Label the internal anatomy of a salmon:



Spinal Cord - transmits information to/from the brain

Swim bladder - helps fish float

Kidney - removes waste from blood, produces urine, aid in osmoregulation (the control of substances like salt in body fluids compared to liquids outside the fish)

Vent - where waste, eggs, and milt are excreted

Urinary Bladder - stores urine

Liver - stores and distributes essential nutrients, maintains blood sugar

Intestines - absorbs nutrients into blood, regulates metabolism

Ovary (female) - produces eggs

Testes (male) - produces milt

Spleen - produces white blood cells, stores emergency blood

Stomach - digests food

Pyloric Caeca - digests food, absorbs nutrients into the blood

Heart - circulates blood

Gills - extract air from water

Brain - control center of the nervous system